

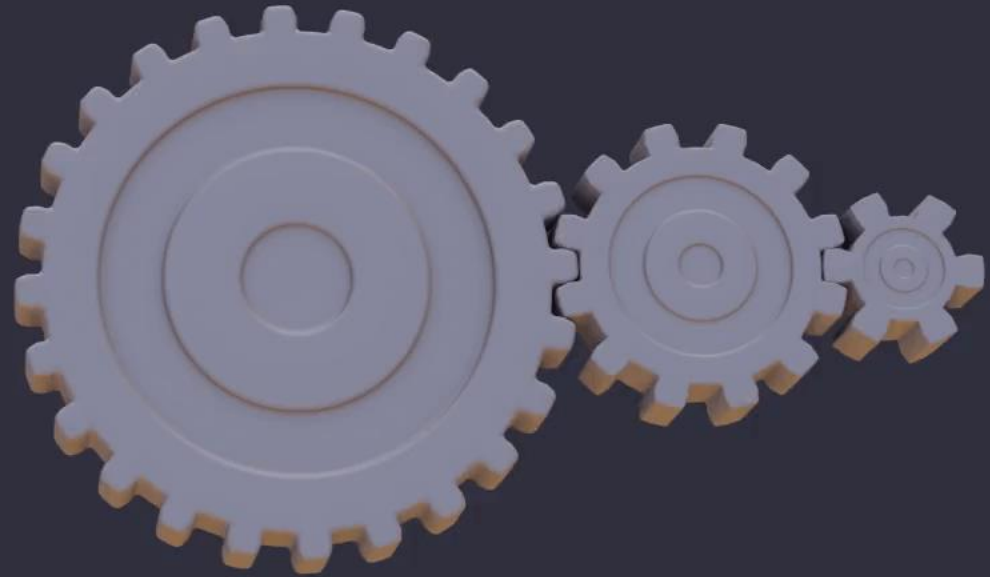
The background is a dark blue field filled with various colorful, rounded geometric shapes in shades of teal, green, orange, and purple. Some shapes are elongated and oriented diagonally, while others are more circular. A thin teal rectangular frame is positioned on the left side of the image, enclosing the text.

GEAR TRAINS

MET 4501

LEAH GINSBERG, PH.D.

GEARS IN MOTION



NOMENCLATURE OF SPUR-GEAR TEETH

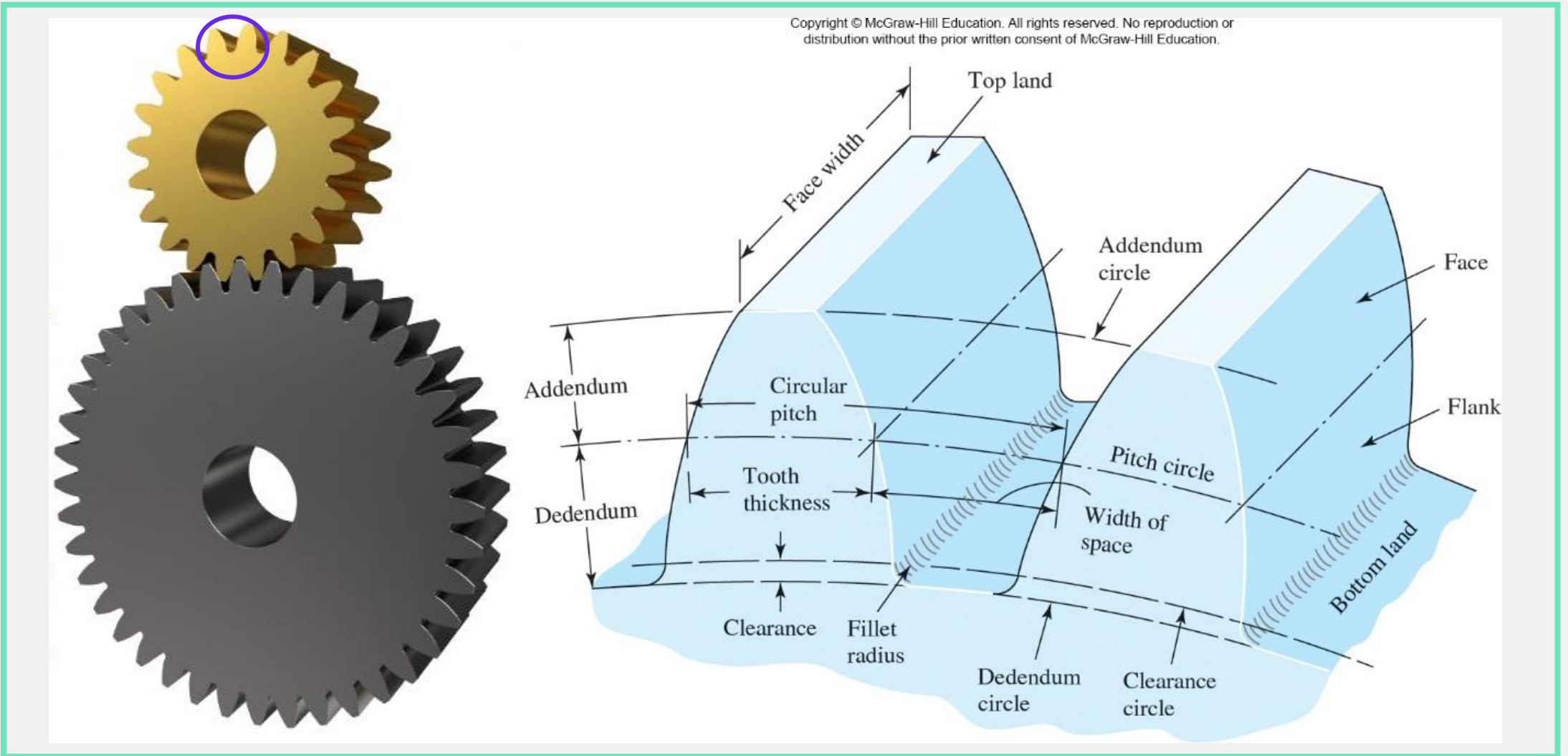


Fig. 13-5

CONTACT RATIO

Copyright © McGraw-Hill Education. All rights reserved. No reproduction or distribution without the prior written consent of McGraw-Hill Education.

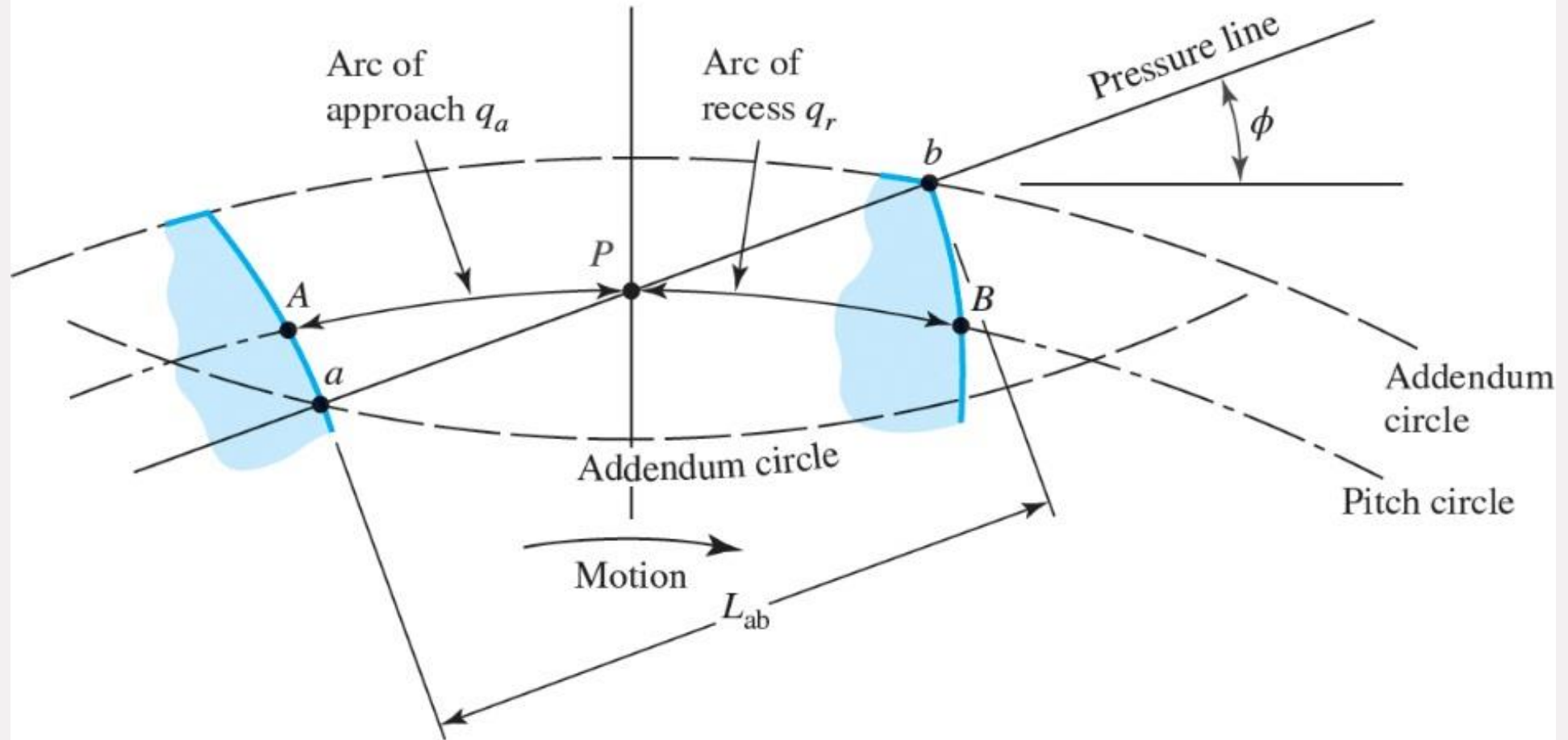


Fig. 13-11

INTERFERENCE

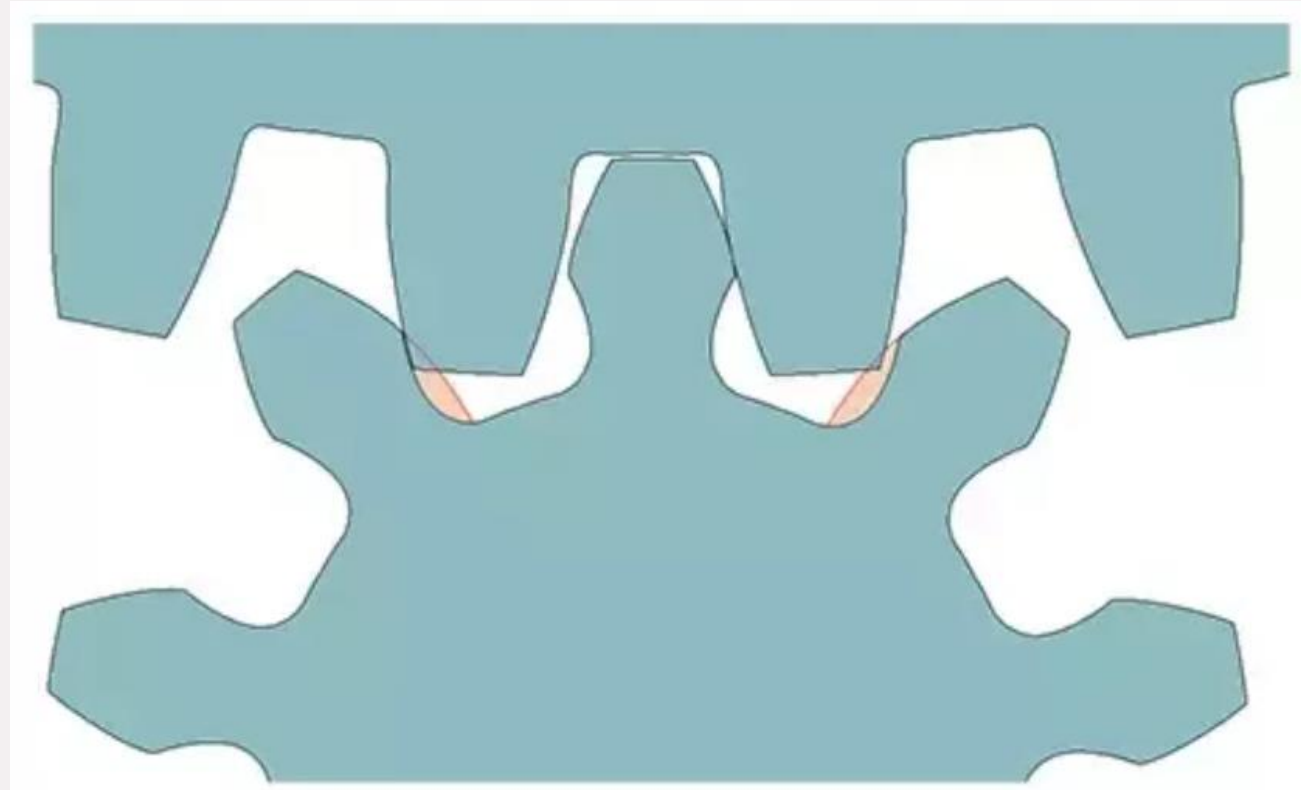
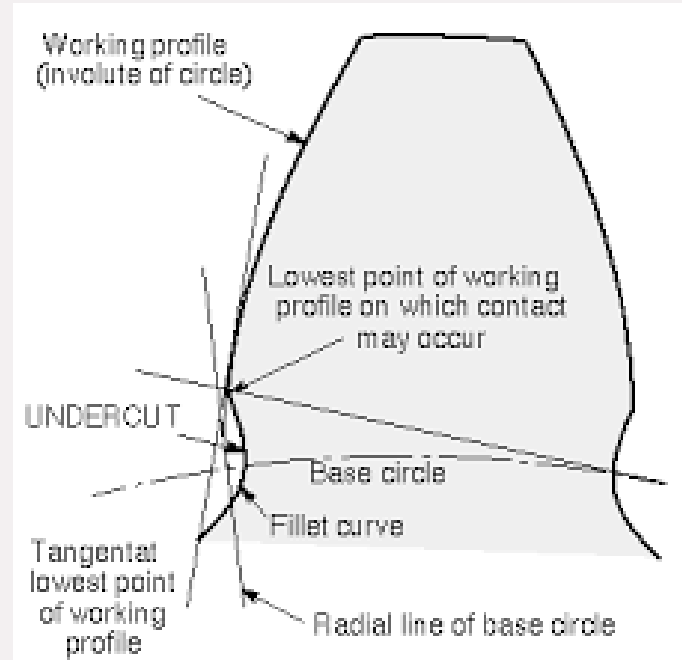
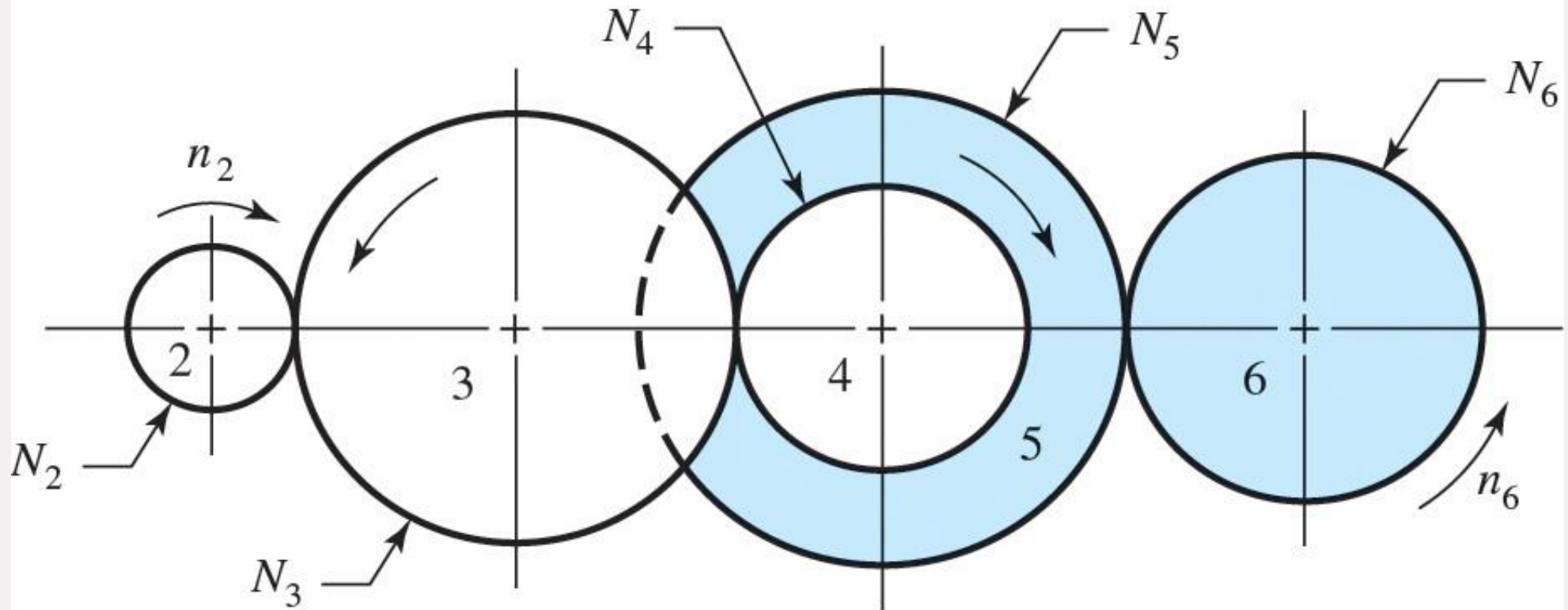


Image source: <https://www.quora.com/What-is-undercutting-in-gear>

GEAR TRAINS

Copyright © McGraw-Hill Education. All rights reserved. No reproduction or distribution without the prior written consent of McGraw-Hill Education.

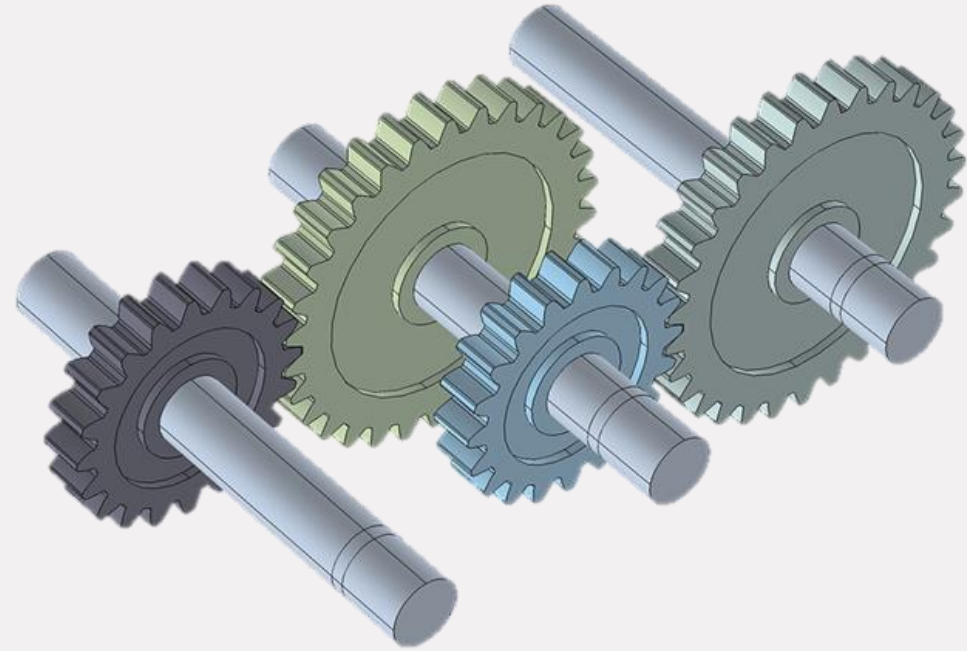


COMPOUND GEAR TRAINS

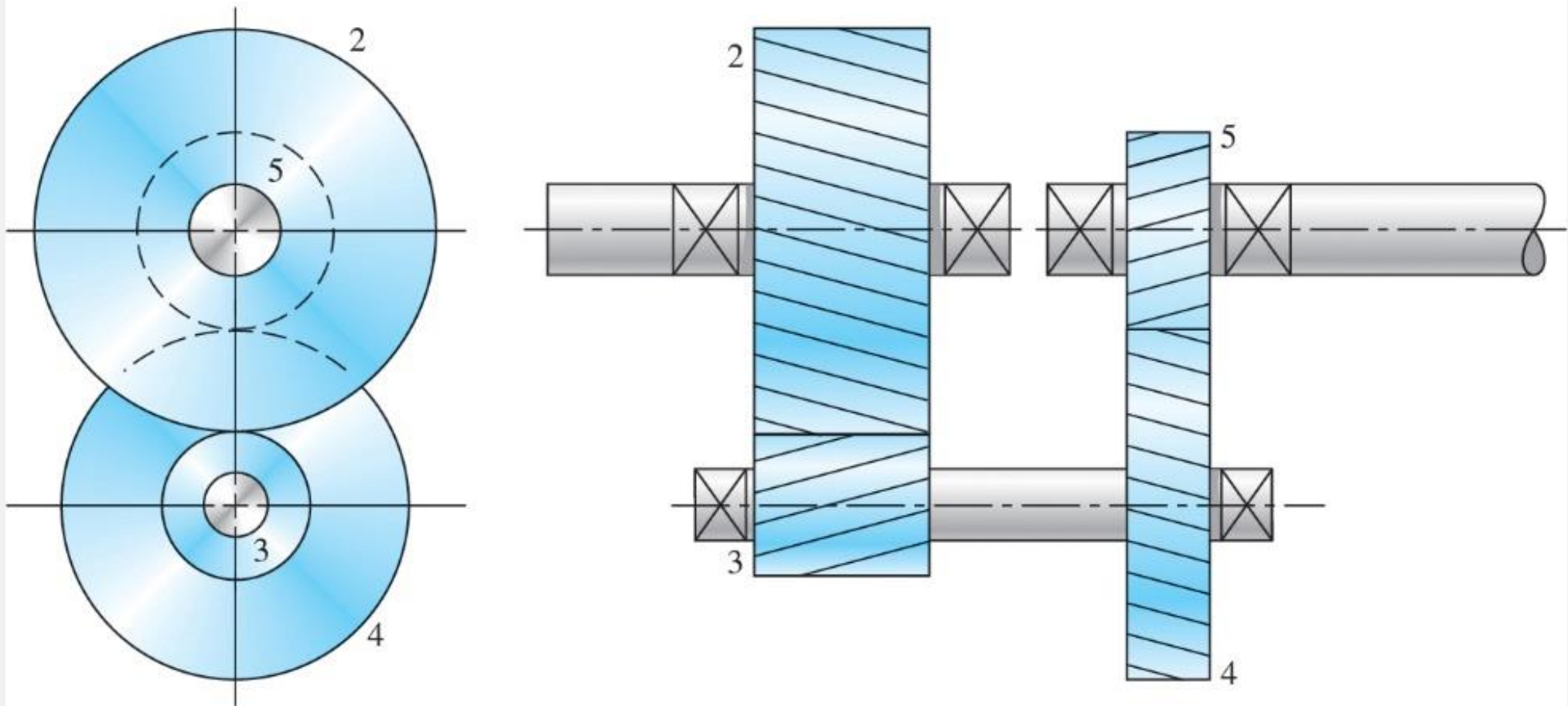
One pair of gears can typically achieve a train value of up to 10 to 1.



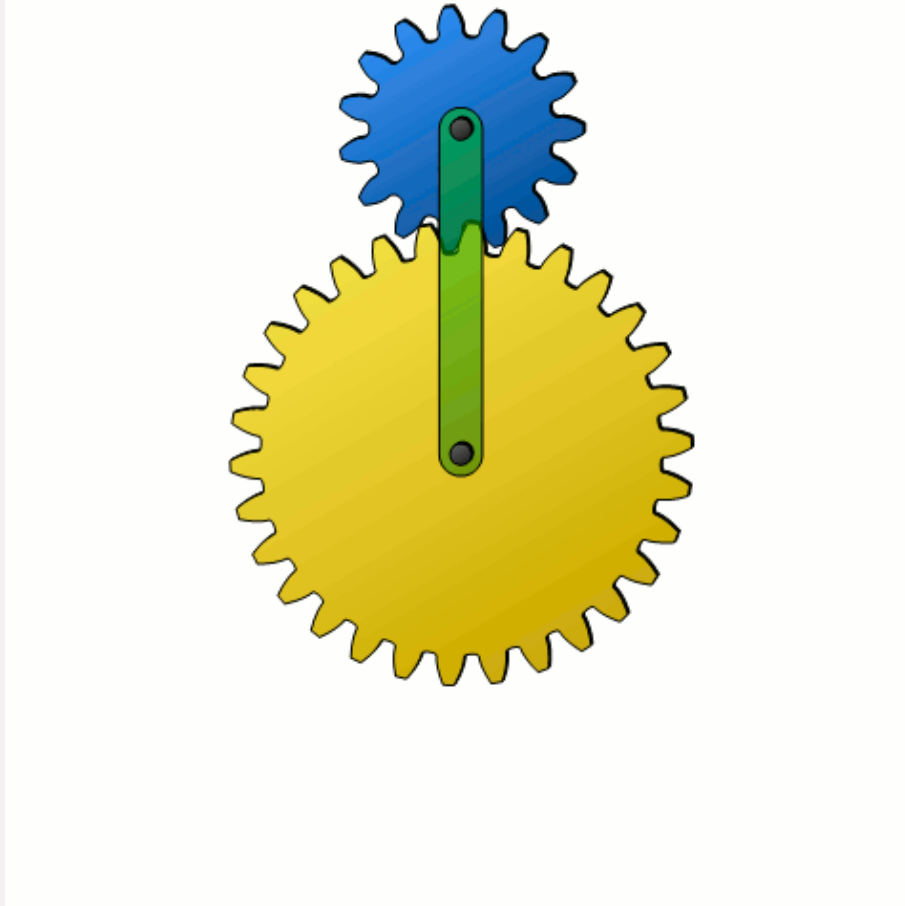
A two-stage compound gear train can be used to achieve a train value of up to 100 to 1.



COMPOUND REVERTED GEAR TRAIN



EPICYCLIC GEAR TRAINS



EPICYCLIC GEAR TRAINS

Copyright © McGraw-Hill Education. All rights reserved. No reproduction or distribution without the prior written consent of McGraw-Hill Education.

